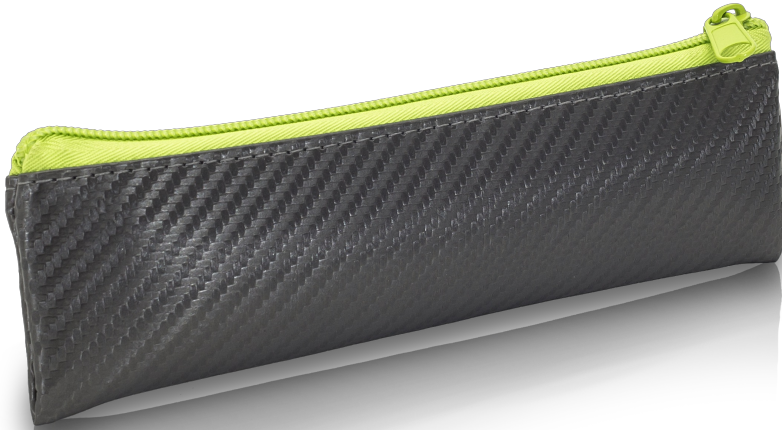


ELITE BAGS - INSULIN - GREY/GREEN



Ref. MEINSU01



29/08/2024 19:43:18 - For information purposes only, can be subject to change

GSH | 30 rue Jean de Guiramand
13290 Aix-en-Provence | France

 www.gsh-med.fr

 +33(0)4 42 90 31 31

 info@gsh-med.fr

ELITE BAGS - INSULIN - GREY/GREEN



Ref. MEINSU01

Description

Small modern and casual, isothermal kit, with capacity for 2 insulin pens.

Material: Grey carbon fiber (green polyester zipper)

- Weight: 0.12 kg.

-Measures: 19.5 x 6 x 1 cm / 0.1L

- Color: Black

- Sold empty

Features

CE Marking	NONE	Medical device	No
Bar code	8436564542205	HS Code	4202.12.99.90
Warranty (months)	24	Country	China

DIMENSIONS AND WEIGHT

Packed unit / Width (cm)	20	Bare Unit / Width (cm)	6
Packed unit / Height (cm)	1	Bare Unit / Height (cm)	1
Packed unit / Length (cm)	6	Bare Unit / Length (cm)	19.5
Packed unit / Weight	0.01	Bare Unit / Weight (kg)	0.012

SPECIFIC STORAGE CONDITIONS

Minimum temperature	NA	Max temperature	NA
Minimum humidity	NA	Maximum humidity	NA

OTHER FEATURES

29/08/2024 19:43:18 - For information purposes only, can be subject to change

GSH | 30 rue Jean de Guiramand
13290 Aix-en-Provence | France

www.gsh-med.fr

+33(0)4 42 90 31 31

info@gsh-med.fr